



UNIT FLOORPLAN FEATURES WESTMOOR

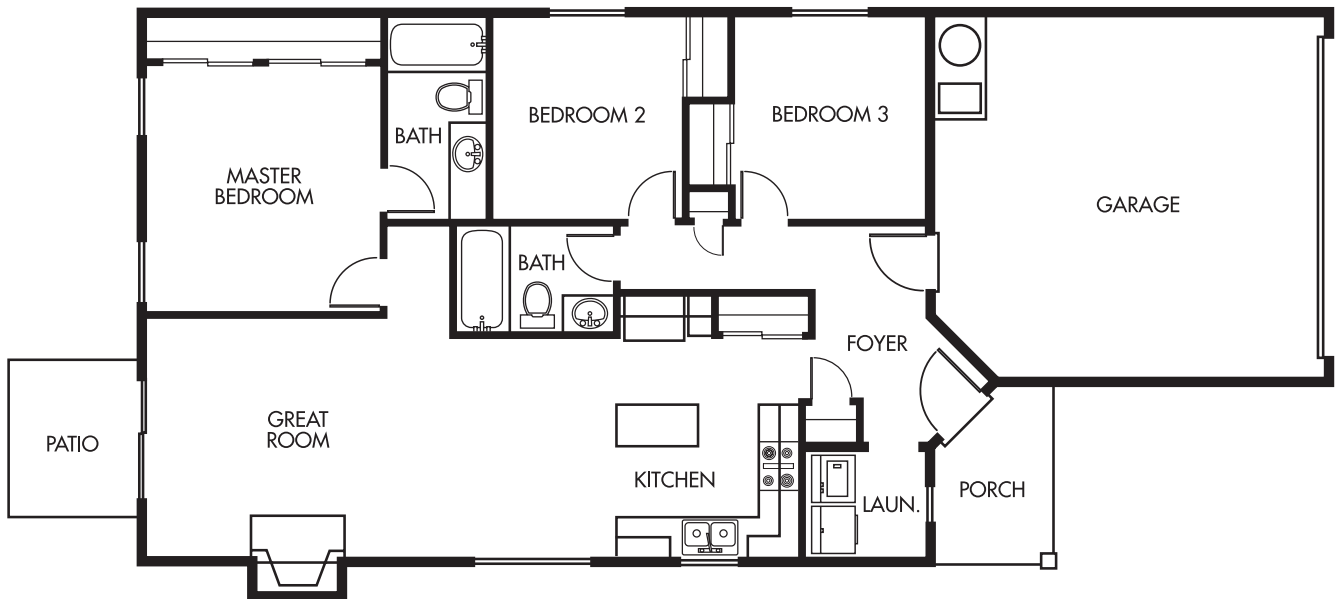
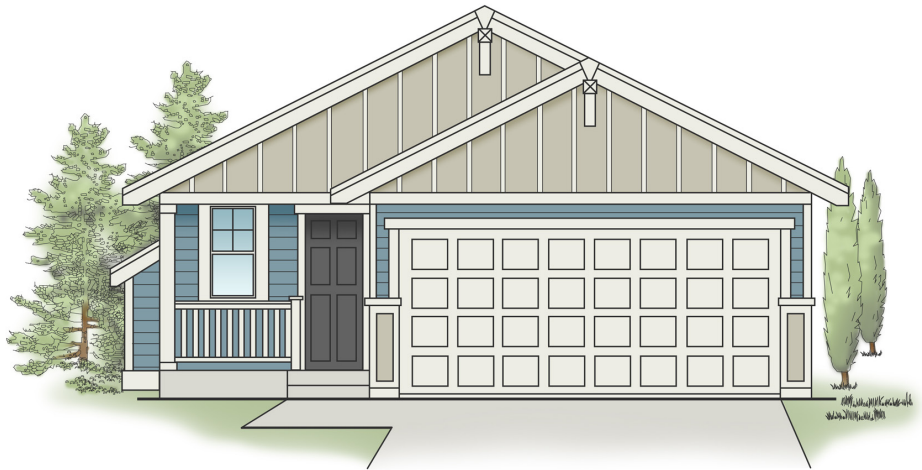
Square Footages:

Rambler Plan

Main Level: 1,131

Total Living: 1,131

Garage: 400



Builder reserves the right to make modifications and changes to prices, floorplans, interior/exterior design, materials and specifications at any time without prior notice and/or obligation.



BILL RILEY
COMMUNITIES
FAMILY